

HOTEL ENERGY STUDY with MELCOTEL INTERFACE

The purpose of this case study is to monitor how much energy can be saved by using the right Controls. The hotel is a budget hotel in Leicester with 135 bedrooms.

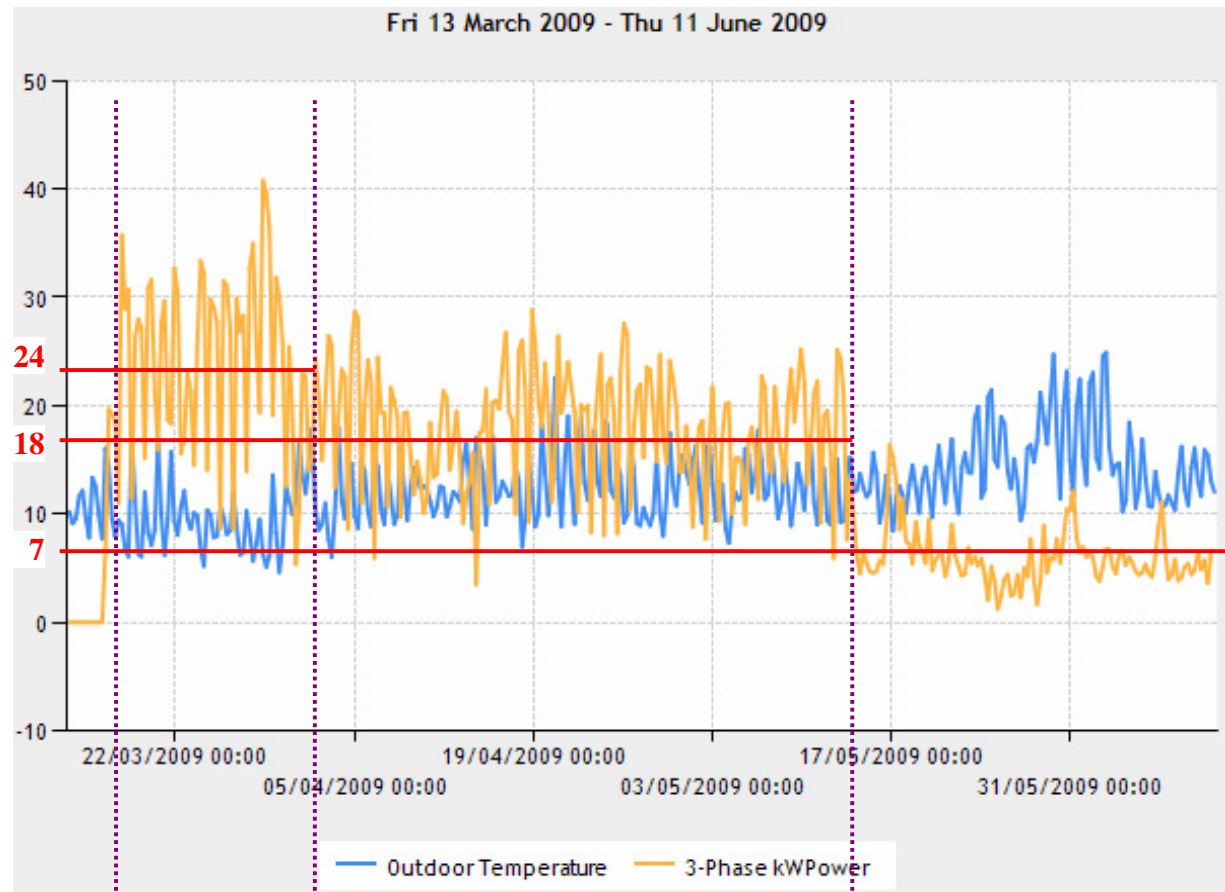
A Machine 2 Machine interface (Mini M2M) was installed on the 15th of March 2009 to monitor the Air Conditioning energy consumption using an energy meter on the main distribution board.

The energy monitoring started on the 22nd of March.

On the 5th of April, the 3 G50 centralised controllers were reset-up with 5 On/Off per day which resulted on a 25% energy saving.

On the 17th of May the MELCOTEL was activated with 6 On/Offs per day (similar to the previous G50 settings), Night Time off at 01:00, Night Set Back, Occupied Setpoint Reset (Auto, 20°C) and Outside Temperature Compensation. An additional 60% was saved on energy saving.

It is also important to note that the ambient temperature went steadily up from the 3rd of May which would normally increase the energy consumption. Instead, with the right controls the end user was able to save up to 70% of its energy bill.



Started
monitoring
energy with
M2M

Optimised
G50 with 5
Off per day

Activated MELCOTEL with 6 Offs
per day, Night time Off, Night Set
Back, Occupied Setpoint Reset and
Outside Temperature Compensation